

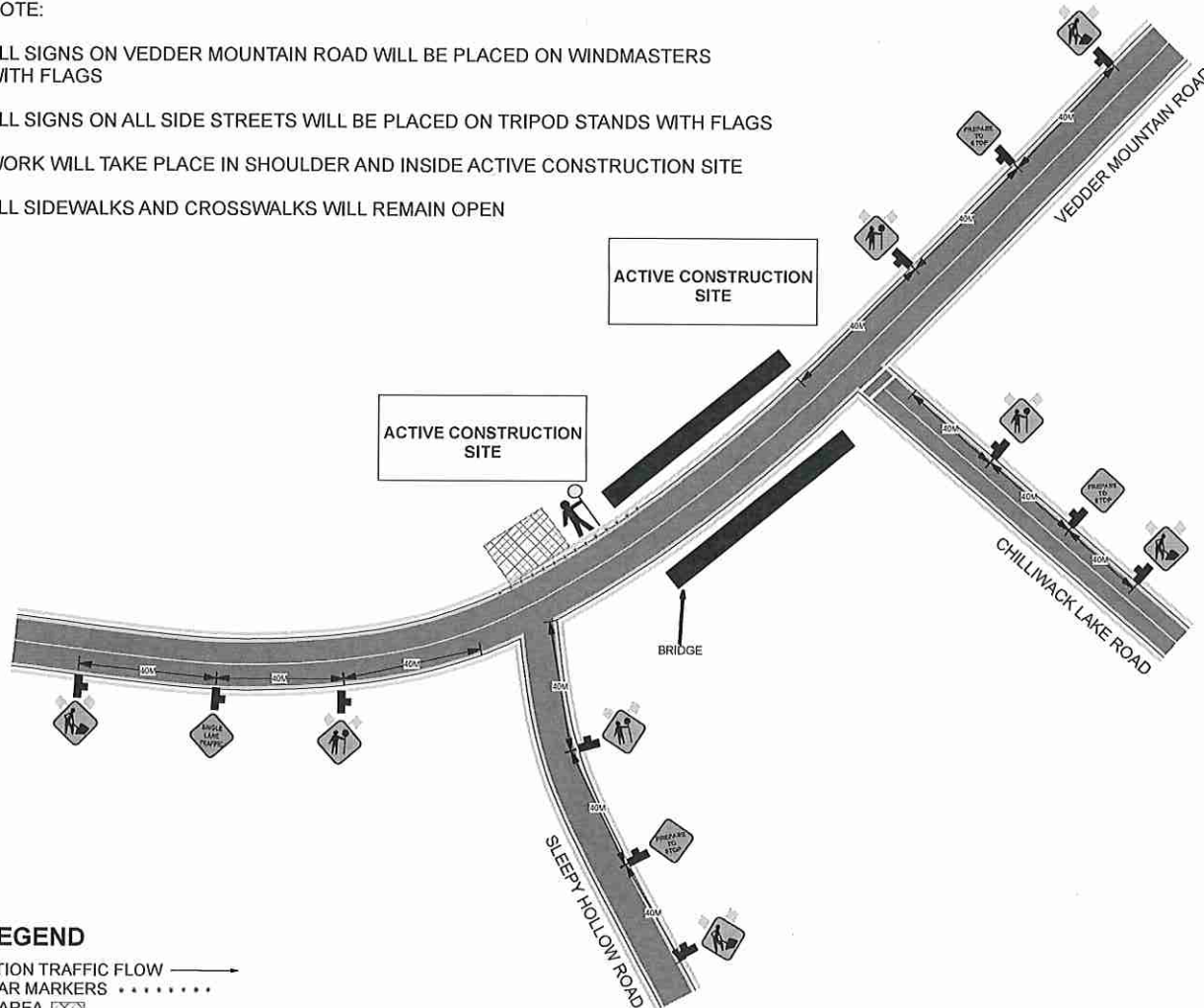
NOTE:

ALL SIGNS ON VEDDER MOUNTAIN ROAD WILL BE PLACED ON WINDMASTERS WITH FLAGS

ALL SIGNS ON ALL SIDE STREETS WILL BE PLACED ON TRIPOD STANDS WITH FLAGS

WORK WILL TAKE PLACE IN SHOULDER AND INSIDE ACTIVE CONSTRUCTION SITE

ALL SIDEWALKS AND CROSSWALKS WILL REMAIN OPEN



LEGEND

- DIRECTION TRAFFIC FLOW →
- TUBULAR MARKERS ······
- WORK AREA [shaded box]
- SIGN STANDS [windmaster/tripod symbol]
- TRAFFIC CONTROLLER [stick figure symbol]
- BUS STOP [rectangle symbol]

CANADIAN UTILITY CONSTRUCTION
 ON SITE CONTACT
 DARREN KIRTON 604-968-1700

TRAFFIC CONTROL WILL BE PROVIDED BY
 CANADIAN UTILITY CONSTRUCTION
 MICHELLE PARKS 604-313-5796